



MONTHLY MEMBERSHIP PROGRESS REPORT

Results as of: 6/30/2015

Multiple District 3

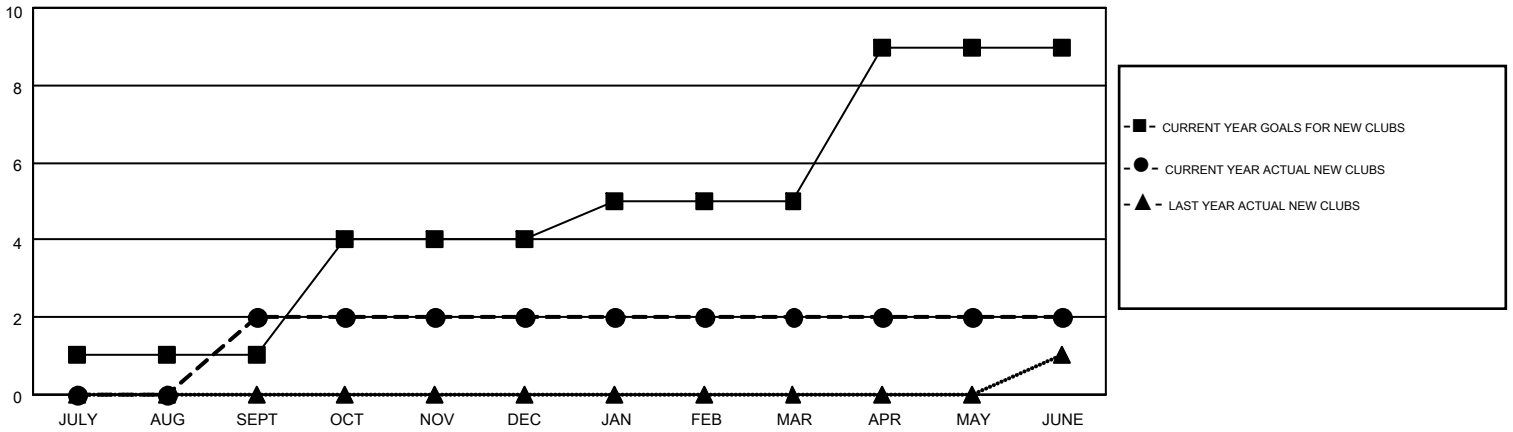
LOCATION: OKLAHOMA

GMT: HAL GRIFFIN

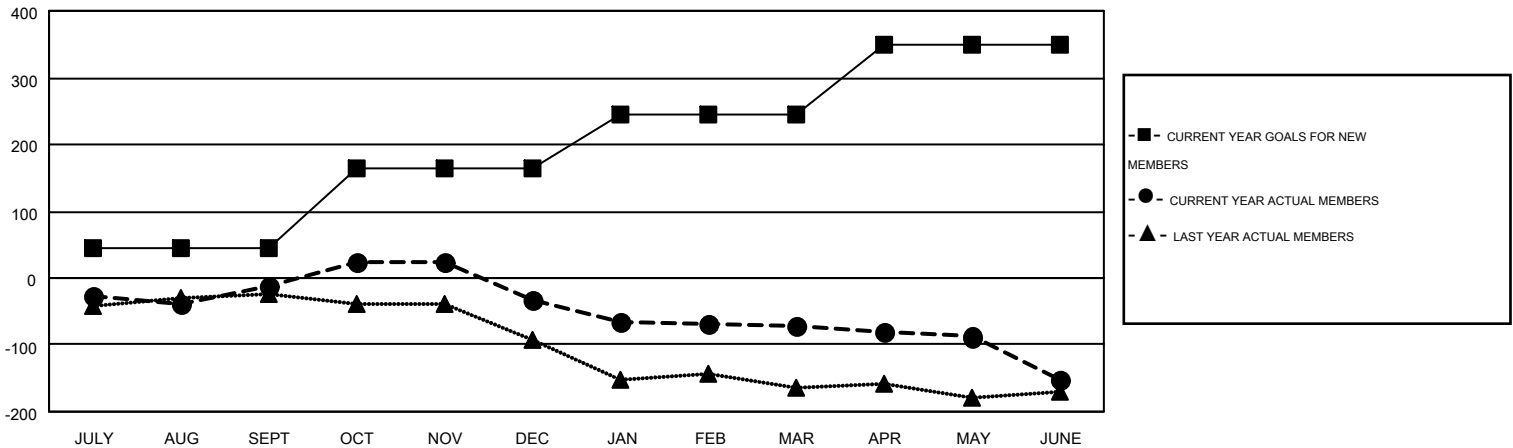
GMT CA 1

Clubs					Members				
RESULTS FOR 2014-2015					RESULTS FOR 2014-2015				
QUARTER	NEW CLUB GOAL	NEW CLUBS	DROPPED CLUBS	NET GAIN/LOSS	QUARTER	NEW MEMBER GOAL	CHARTER AND NEW MEMBERS ADDED	DROPPED MEMBERS	NET GAIN/LOSS
JULY/AUG/SEPT	1	2	1	1	JULY/AUG/SEPT	46	167	178	-11
OCT/NOV/DEC	3	0	2	-2	OCT/NOV/DEC	118	122	143	-21
JAN/FEB/MAR	1	0	0	0	JAN/FEB/MAR	82	124	163	-39
APR/MAY/JUNE	4	0	2	-2	APR/MAY/JUNE	103	99	179	-80

GOALS AND ACTUAL NEW CLUBS CUMULATIVE



GOALS AND ACTUAL MEMBERS CUMULATIVE



DROPPED CLUBS: 5	132 CLUBS OF 175 ADDED 1 OR MORE NEW MEMBERS	<u>GENDER DISTRIBUTION</u>	
		MALE	3,081 (70.81%)
<u>DROPPED MEMBERS</u>		FEMALE	1,270 (29.19%)
DECEASED	56	FAMILY UNIT MEMBERS 627	
CLUB CANCELLED	51	HEAD OF HOUSEHOLD 305	
OTHER	556	NON-HEAD OF HOUSEHOLD 322	
TOTAL	663		

[CLICK HERE FOR HEALTH ASSESSMENT DATA](#)